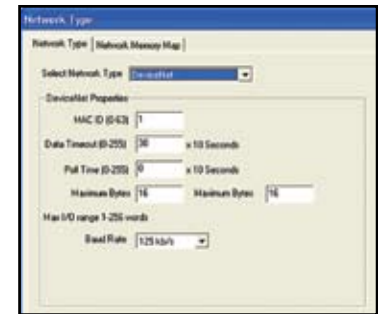
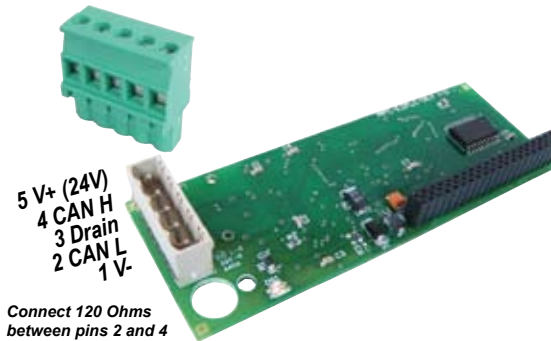


DeviceNet and Profibus Option Cards

DeviceNet

EZPLC-Devicenet option card can be installed on the back side of EZPLC's motherboard as described fully in the user manual. This option card ships with a standard 5 pin DeviceNet connector as shown to the right.

This option card allows EZPLC to become a slave node on a DeviceNet network. 256 bytes of data can be exchanged between the DeviceNet master and EZPLC in a predefined group to master/slave communication mode..



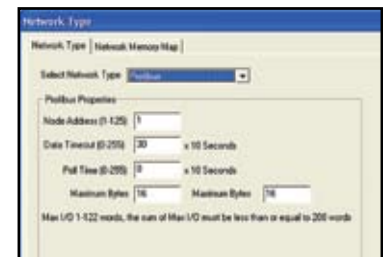
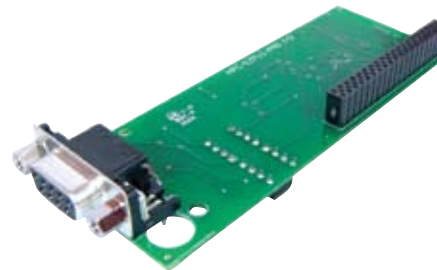
Network Size	Up to 64 Nodes
Network Length	Selectable end-to-end network distance varies with speed. 125 Kbps 500 m (1,640 ft) 250 Kbps 250 m (820 ft) 500 Kbps 100 m (328 ft)
Data Packets	0-128 words produced and consumed
System Features	Selectable end-to-end network distance varies with speed.

Type	Description of Operation
Polled	EZPLC DeviceNet communications card when configured for polled I/O will allow "output" data to be received from a master controller in the sequence pre-determined by a master controller. The polling rate of a network depends on the total number of nodes present on a network, baud rate, size of messages exchanged on the network, and the internal settings (timing) of a master controller. Polled DeviceNet I/O data can either be unicast or multicast.

Profibus

EZPLC-Profibus option card can be installed on the back side of EZPLC's motherboard as described fully in the user manual. This gives EZPLC the ability to link with the Profibus master controller. This communication interface provides the ability to transfer 244 bytes of data between a Profibus master and EZPLC. The Profibus communication interface has an auto-detect feature for the baud rate of the Profibus network.

The option card has a Profibus approved standard 9-pin D-sub female connector. You can plug any Profibus certified 9-pin male D-sub connector, such as ERNI 103658 or 103659, into this option card. Recommended cables are Belden 3079A or Siemens 6XV1 830 0AH10. Maximum network length depends on the frequency at which your Profibus network is operating. The EZPLC-Profibus option card can operate from 9.6 Kbps to 12Mbps as selected through the EZPLC programming software.



EZPLC Accessories

Part Number	Description	Price
EZPLC-EDIT	EZPLC Programming Software	See Web
EZPLC-M	Hardware User Manual for EZPLC CPU and Base	
EZIO-M	Hardware User Manual for EZI/O Modules	
EZPLC-CM	Hardware User Manual for DeviceNet, Profibus and Ethernet options	
EZPLC-BAT	EZPLC Replacement Battery	
EZP-PGMCBL	Programming Cable	
EZIO-DUMMY	Dummy Module for Open Slots	
EZIO-TERM11	11 Pin Removable 3.5mm Phoenix Terminal Block	
EZPLC-TERM5	5 Pin Removable 3.5mm Phoenix Terminal Block	
EZPLC-DNTERM5	DeviceNet 5 Pin Field Terminal Block	